

Simon's Creek home site #15

9624 34th St Ct E; Edgewood

Offered at \$539,950

MLS# 862919



THE NEWPORT

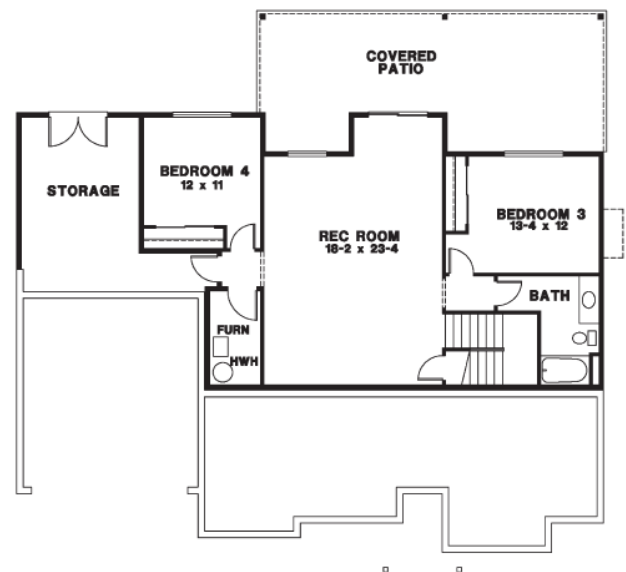
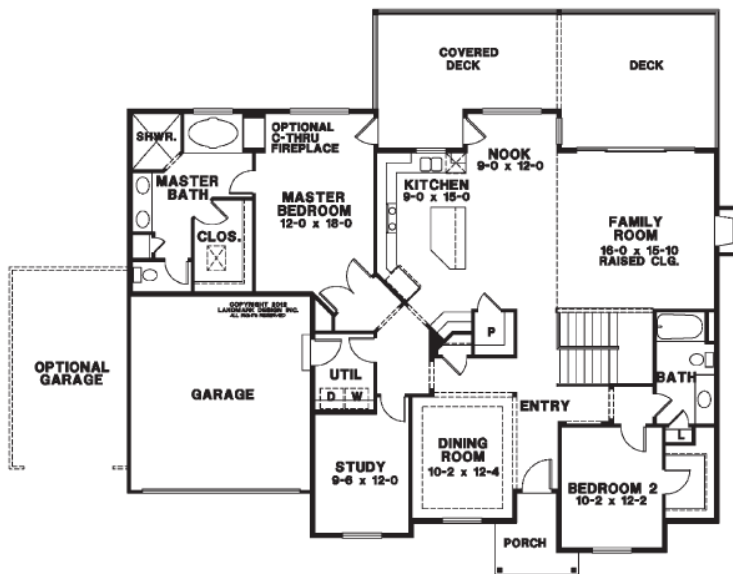
SIZE	FEATURES
3114 sf.	4 Bedrooms / 3 Baths / Den / Bonus Storage Room / Rec Room

The Newport plan is daylight Rambler with tons of character and space for life whether inside or out! Access the covered entry and continue past the formal dining room you'll find a french-door-to-master on-the-main with 5 piece master bath and walk-in closet. There's also a guest suite with a walk-in closet and nearby full bathroom. The utility room is on this level as well as a masterful kitchen with island, generous family room with plenty of light and sliders to the expansive half-covered outdoor entertainment area that's perfect for quiet evenings. Downstairs you'll find a large recreational room and two additional bedrooms along with a full bathroom, a bonus or storage room, and access to a huge covered patio. And the optional three car garage finishes up a great living home.



MAIN LEVEL FLOOR PLAN

UPPER LEVEL FLOOR PLAN



For more information, please contact listing agent: Doug Walker 253-370-1690

JK MONARCH
FINE HOMES

Note: Continuing a policy for constant improvement, builder reserves the right to change features, brand names, dimensions, architectural details and designs. This brochure is for illustrative purposes and drawings are not to scale. This is not part of a legal contract. Prices are subject to change without notice.

JKMONARCH.COM

Mailing Address. P.O. Box 188 . Puyallup, Washington 98371 | phone. 253.840.5660

